

S.E.M. Z MATCH INSTRUCTIONS

ANTENNA CONNECTIONS

Connect a co-axial line from the transmitter or receiver to the input socket at the bottom of the Z Match. There is a choice of aerial connections either the coloured plastic terminals or the adjacent coaxial socket may be used depending on the type of aerial in use.

1. 80 or 40 metres - use the black terminals or the adjacent coaxial socket.
2. 20-15 or 10 metres - use the red terminal or their adjacent coaxial socket.

Different types of aerial require different connections as follows:-

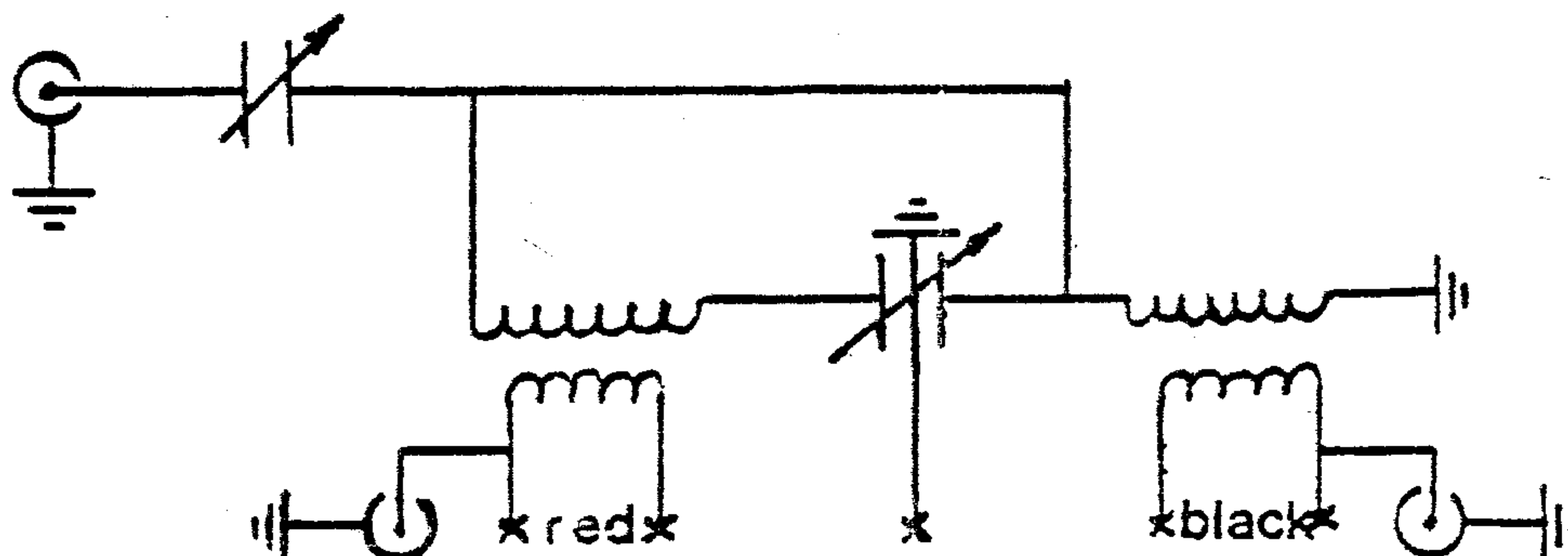
1. Coaxial cable fed aeri^{als}. Plug the aerial into the appropriate (for the band in use) co-ax socket, connect a wire from the plastic terminal to the earth lug.
2. Balance twin feeders. Connect the feeder wires to the appropriate plastic covered terminals. No connection to earth terminal.
3. End fed aeri^{als}. Connect the aerial wire to one of the appropriate terminals. Connect the other terminal to the earth tag.

ADJUSTMENT

Receiving Peak up the two front panel capacitor controls for maximum signal strength on receive.

Transmitting Connect an SWR meter or impedance bridge between the transmitter and the Z Match. Turn the sensitivity control of the bridge to maximum. Put a small amount of R.F. into the system to obtain a reading on the bridge and adjust the controls on the matching unit for minimum reflected power. Increasing the R.F. to maintain a reading on the meter. The transmitter should be adjusted for correct loading after the matching unit has been set correctly. If a double meter SWR bridge is being used, try to ignore the changing reading of the forward meter.

Make a note of the dial readings for each aerial on each band to ease future adjustment.

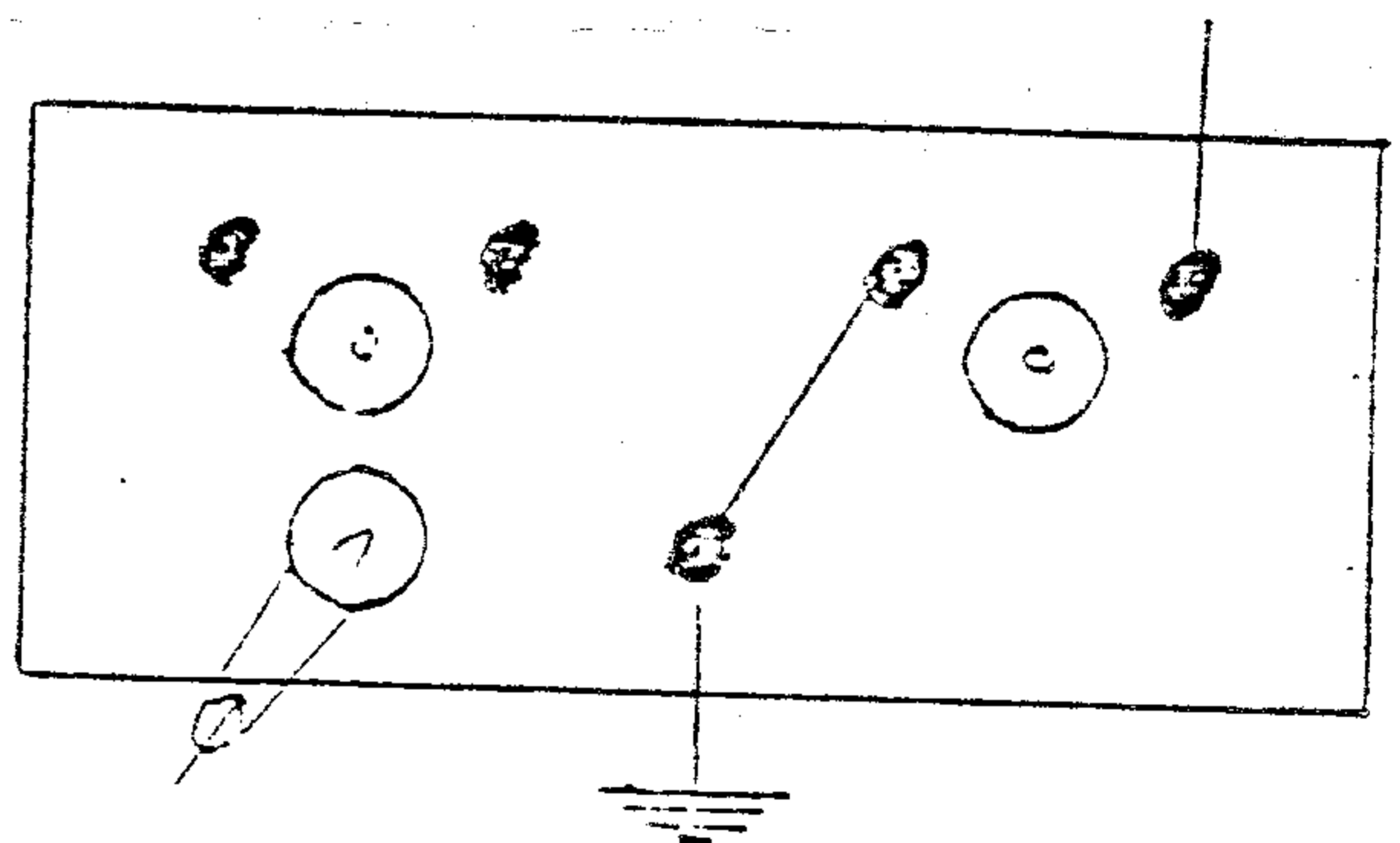
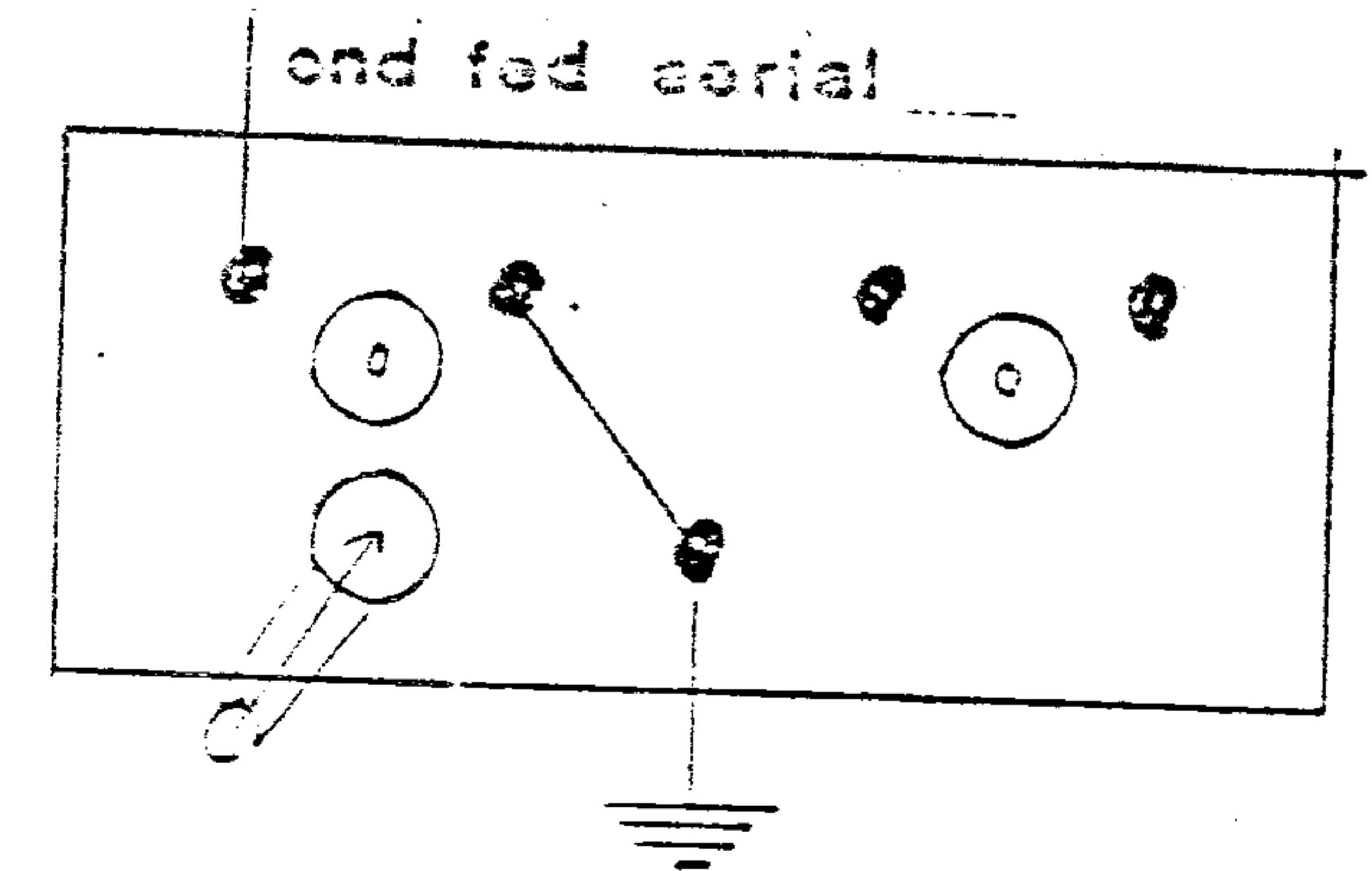
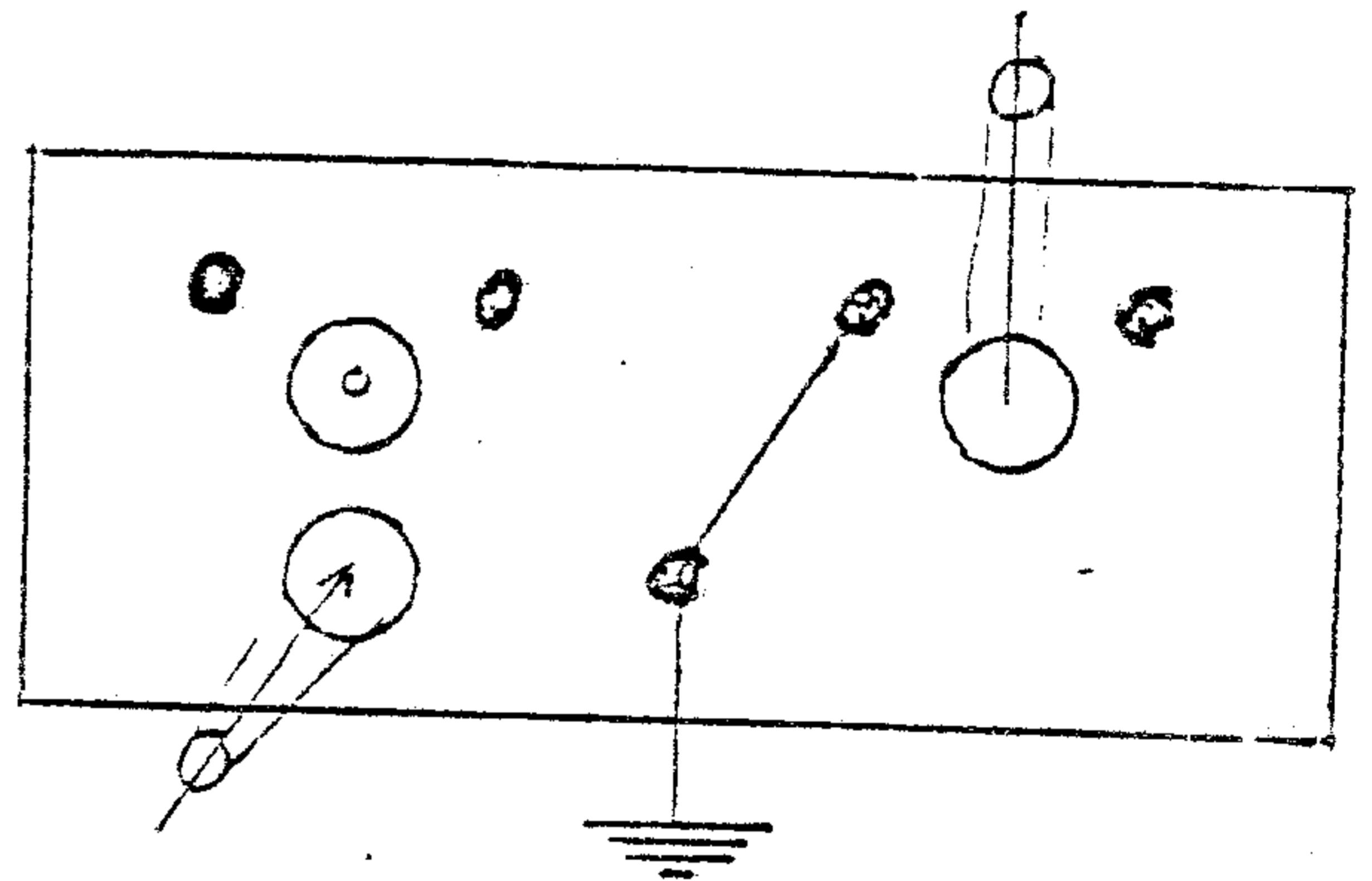
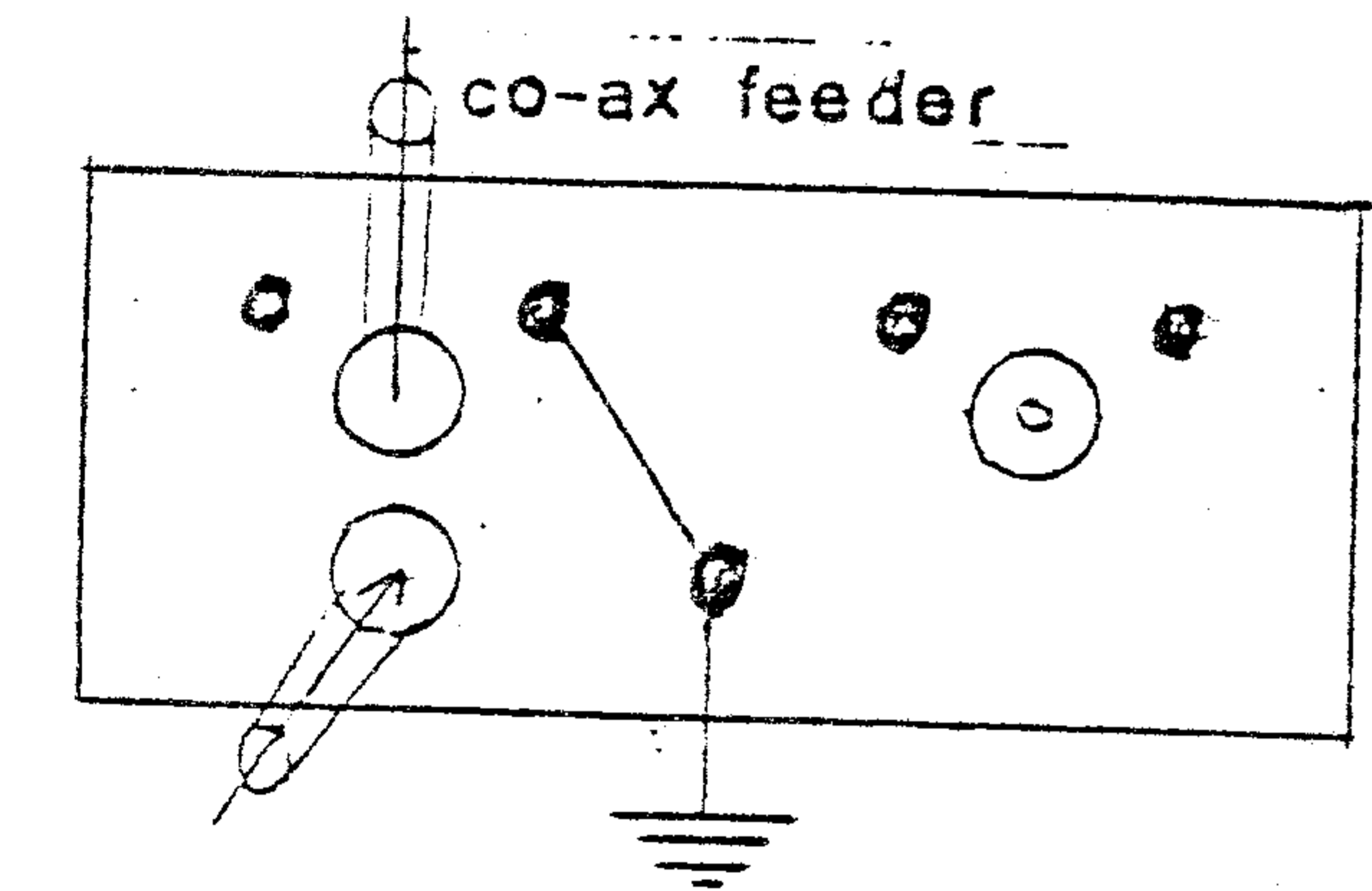
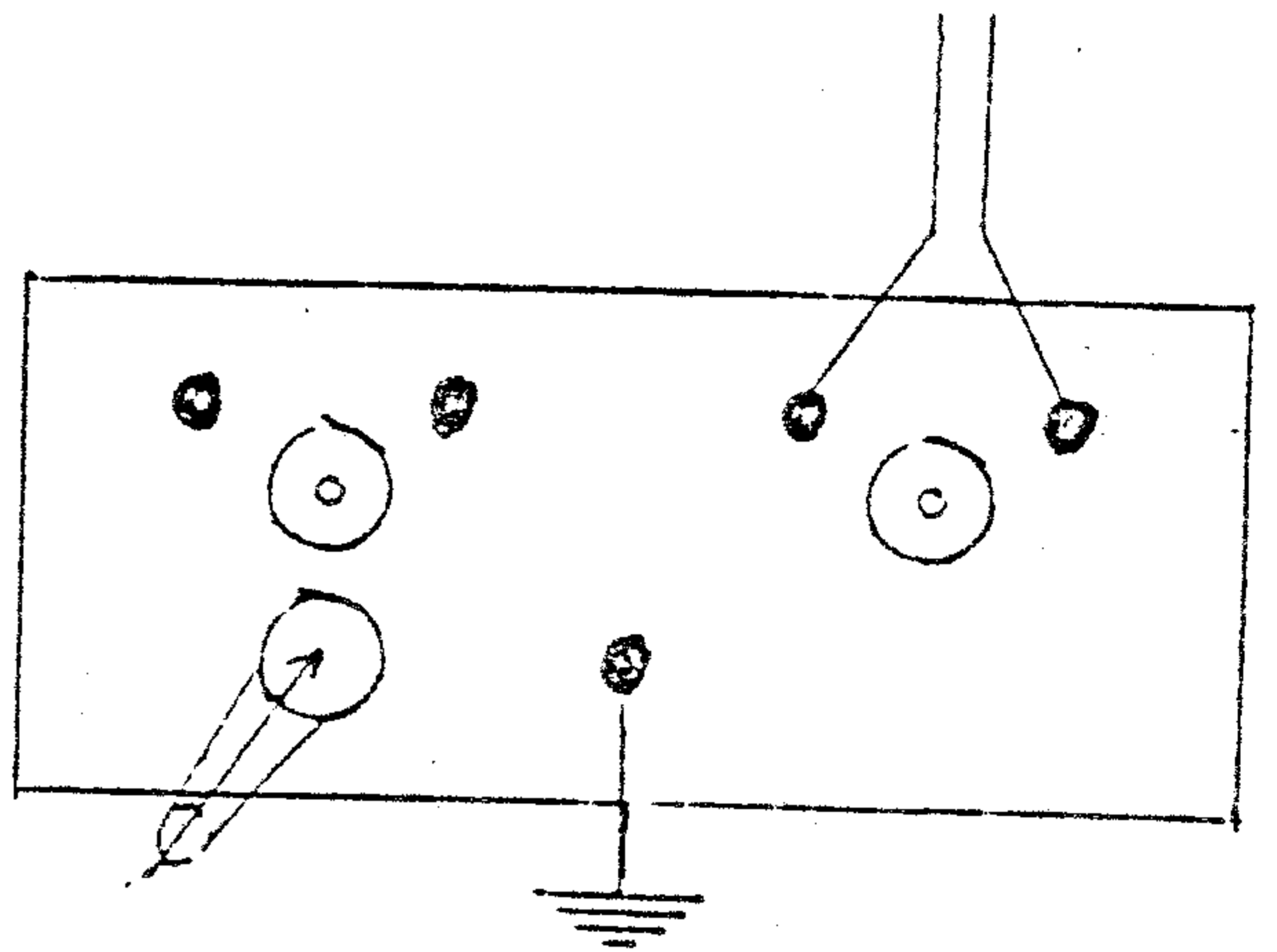
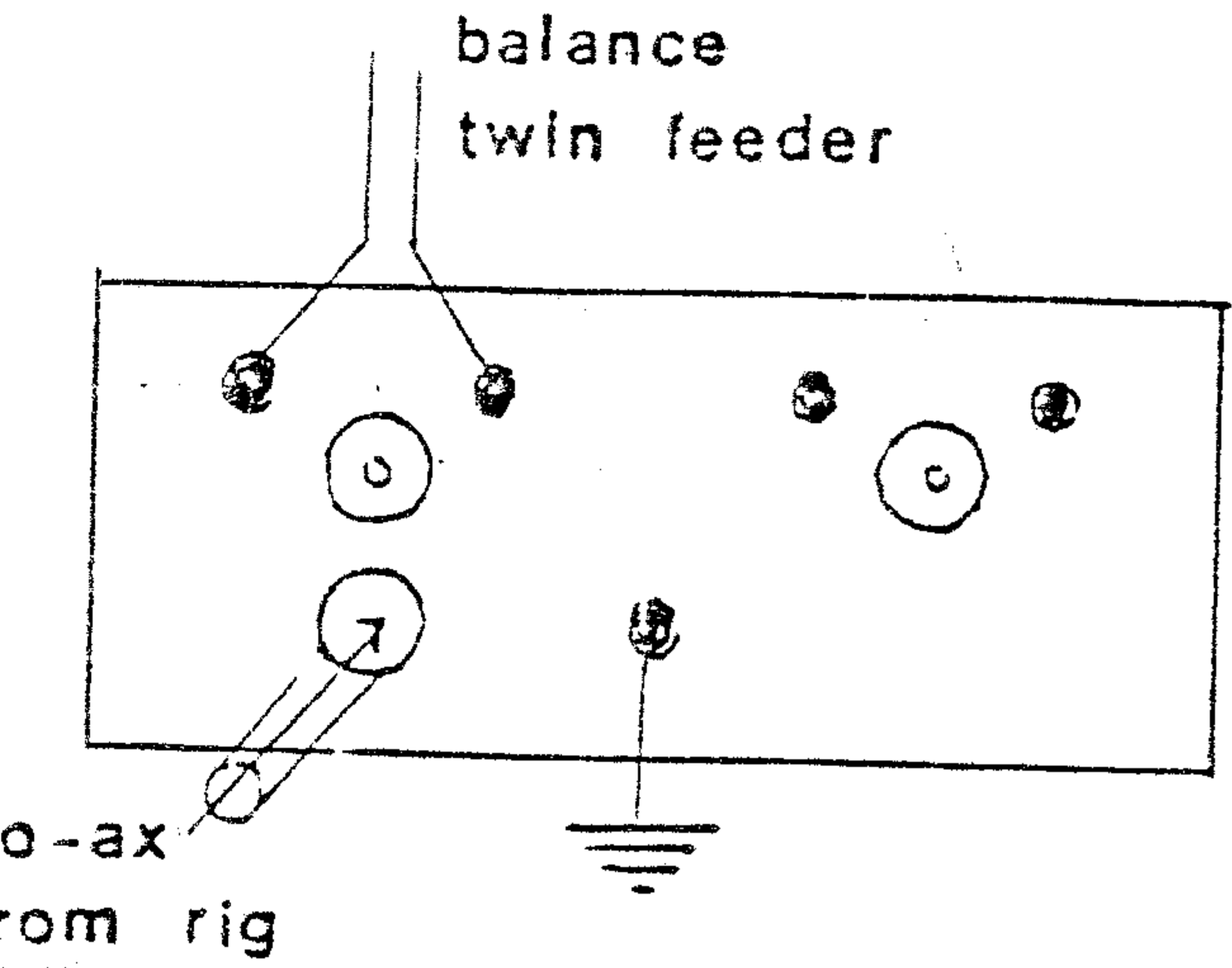


20-15-10M

40-80M

160-80-40

20-15-10



S.E.M. TRAN Z MATCH/EZITUNE CONNECTIONS

Connect an 8 - 12 V supply (current required 25mA) to the red and black 2 mm sockets on the back of the TRAN Z MATCH.

Switch the EZITUNE ON. A strong noise will be received in the receiver,

Adjust the TRAN Z MATCH for minimum S meter reading from the noise.

Switch the EZITUNE OFF.

The system will now be matched to 50 Ohms.