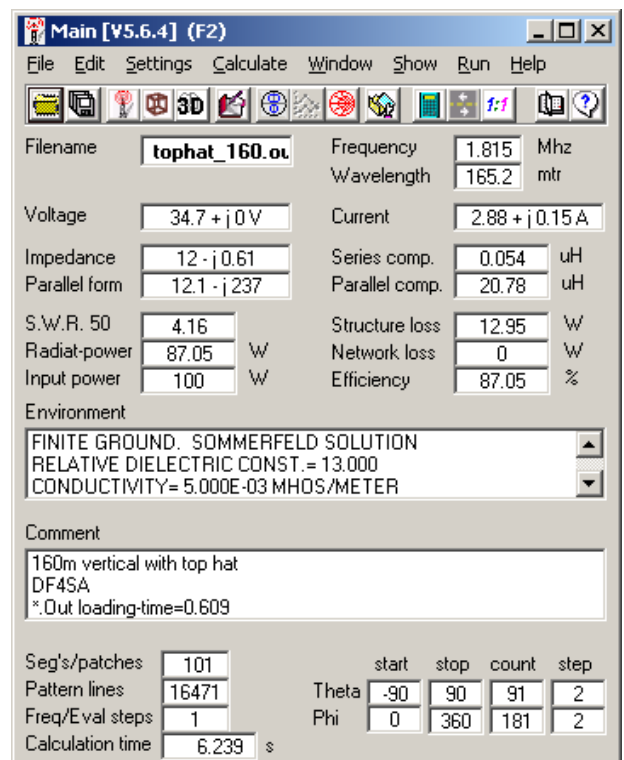
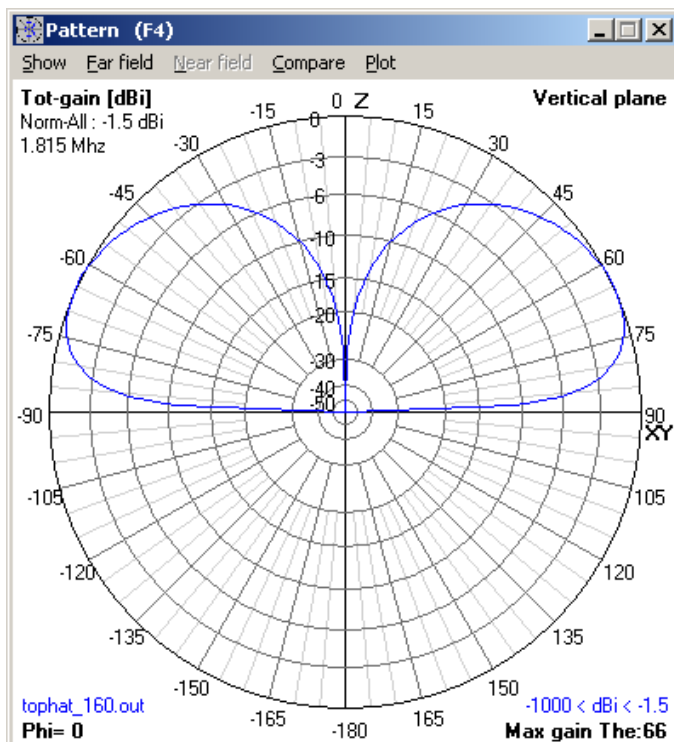
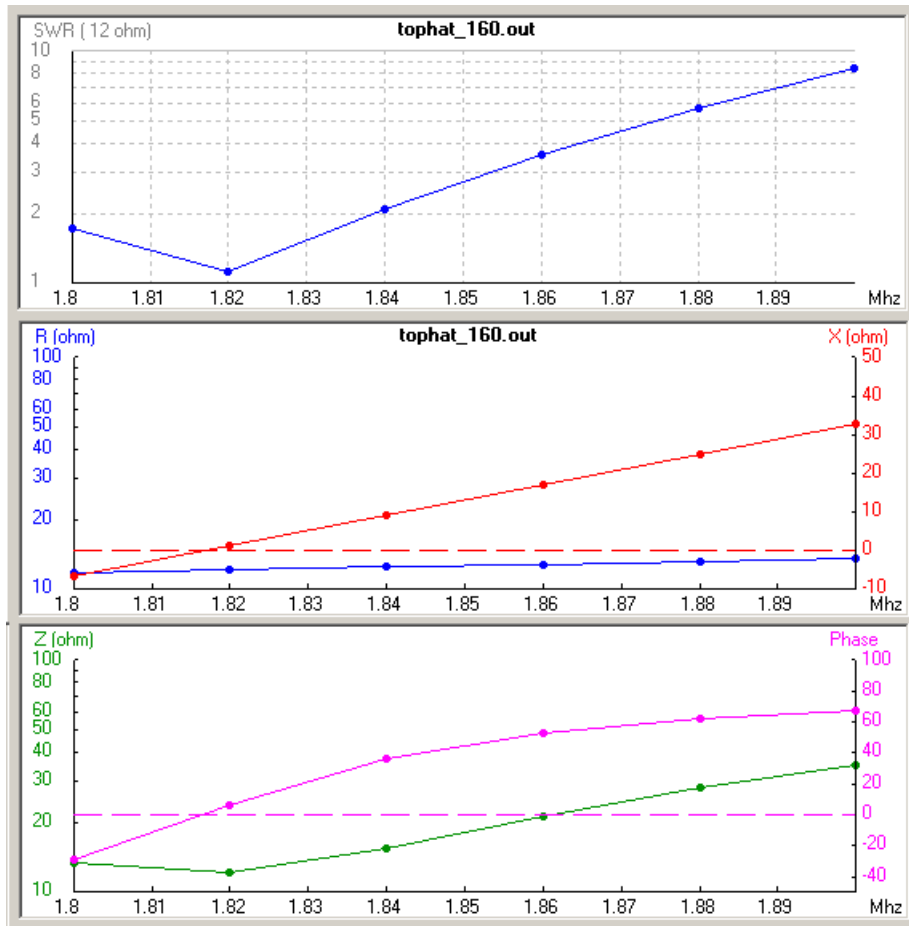


## Simulationsmodell 160m Vertikal

- 15m hoher Strahler mit 4 Toploading wires á 12.5m Länge
- 4 Radials á 40m Länge



CM 160m vertical with top hat  
CE DF4SA  
GW 1 1 0 0 0.2 0 0 0.3 1.e-3  
GW 2 10 0 0 0.3 0 0 15.2 1.e-3  
GW 3 10 0 0 15.2 0 0 15.3 5.e-4  
GW 4 10 0 0 15.2 0 9.9520274 7.6364592 5.e-4  
GW 5 10 0 0 15.2 0 -9.952027 7.6364592 5.e-4  
GW 6 10 0 0 15.2 9.9520274 0 7.6364592 5.e-4  
GW 7 10 0 0 15.2 -9.952027 0 7.6364592 5.e-4  
GW 102 10 0 0 0.2 0 40 0.2 5.e-4  
GW 103 10 0 0 0.2 0 -40 0.2 5.e-4  
GW 104 10 0 0 0.2 40 0 0.2 5.e-4  
GW 105 10 0 0 0.2 -40 0 0.2 5.e-4  
GE 0  
EX 0 1 1 0 1.0000 0.0000  
LD 5 0 0 0 58001000  
FR 0 1 0 0 1.815  
GN 2 0 0 0 13 .005  
XQ  
EN